

■ GLASS





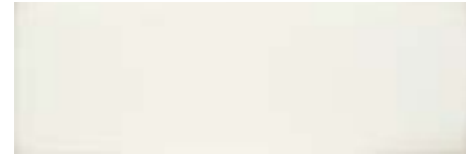






BICOTTURA DA RIVESTIMENTO / DOUBLE-FIRED WALL TILE

ISO 13006 - G - BIII GL (E > 10%) UNI EN 14411 - L



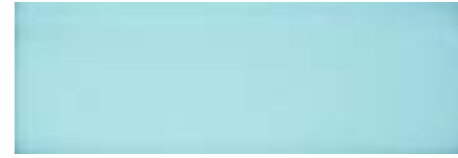
**GLASS 26W**  
20X60 - 8"X24"



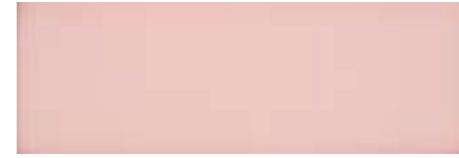
**GLASS 26Y**  
20X60 - 8"X24"



**GLASS 26V**  
20X60 - 8"X24"



**GLASS 26L**  
20X60 - 8"X24"



**GLASS 26LV**  
20X60 - 8"X24"



**GLASS1 26W**  
20X60 - 8"X24"



**GLASS1 26Y**  
20X60 - 8"X24"



**GLASS1 26V**  
20X60 - 8"X24"



**GLASS1 26L**  
20X60 - 8"X24"



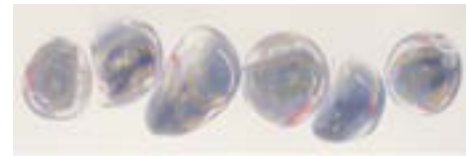
**GLASS1 26LV**  
20X60 - 8"X24"

**GLASS L1,5X20Y** △  
1,5X20 - 0.6"X8"

**GLASS L1,5X20V** △  
1,5X20 - 0.6"X8"

**GLASS L1,5X20L** △  
1,5X20 - 0.6"X8"

**GLASS L1,5X20LV** △  
1,5X20 - 0.6"X8"



**GLASS2 26MIX**  
20X60 - 8"X24"



**GLASS DK1 26** △  
20X60 - 8"X24"













**GLASS DK2 26VL** △  
20X60 - 8"X24"



**GLASS DK2 26YLV** △  
20X60 - 8"X24"

## Caratteristiche Tecniche Gres Porcellanato Technical Specifications Porcelain Stoneware

UNI EN 14411 (ISO 13006) - Bia (appendice G)






CARATTERISTICA SPECIFICATION	METODO DI PROVA TEST METHODS	REQUISITI PREVISTI DALLA NORMA REQUIREMENTS IN ACCORDANCE TO THE STANDARDS	VALORE MEDIO IMOLA IMOLA AVERAGE VALUE
 <b>DIMENSIONI E ASPETTO</b> DIMENSIONS AND APPEARANCE	ISO 10545-2	PROSPETTO G.1 PROSPECT G.1	CONFORME COMPLIANT
 <b>ASSORBIMENTO D'ACQUA</b> WATER ABSORPTION	ISO 10545-3	≤ 0,5%	≤ 0,1%
 <b>RESISTENZA A FLESSIONE</b> FLEXURAL RESISTANCE		min./МИН 35 N/mm <sup>2</sup>	> 45 N/mm <sup>2</sup>
<b>SFORZO DI ROTTURA</b> MODULUS OF RUPTURE	ISO 10545-4	<b>SPESSORE / THICKNESS</b>	8,5 mm* 2500 N* 12 mm* 5000 N* 14 mm* 6500 N* 20 mm** 11000 N**
 <b>RESISTENZA ALL'ABRASIONE PROFONDA</b> DEEP ABRASION RESISTANCE	ISO 10545-6	≤ 175 mm <sup>3</sup>	< 140 mm <sup>3</sup>
<b>RESISTENZA ALL'ABRASIONE SUPERFICIALE</b> RESISTANCE TO SURFACE ABRASION	ISO 10545-7	CLASSI 0-5 CLASSES 0-5	COME INDICATO IN CATALOGO AS INDICATED IN THE CATALOGUE
 <b>COEFFICIENTE DILATAZIONE TERMICA LINEARE (α)</b> LINEAR EXPANSION THERMIC COEFFICIENT	ISO 10545-8	METODO DISPONIBILE AVAILABLE ON REQUEST	≤ 7x10 <sup>-6</sup> °C <sup>-1</sup>
 <b>RESISTENZA AGLI SBALZI TERMICI</b> RESISTANCE TO SUDDEN TEMPERATURE CHANGES	ISO 10545-9	METODO DISPONIBILE AVAILABLE ON REQUEST	RESISTE RESISTANT
 <b>RESISTENZA AL GELO</b> FROST RESISTANCE	ISO 10545-12	RICHIESTA ALWAYS TESTED	RESISTE RESISTANT
 <b>PRODOTTI CHIMICI AD USO DOMESTICO ED ADDITIVI PER PISCINA</b> HOUSEHOLD CHEMICALS AND SWIMMING POOL WATER CLEANSERS		UGL min. UB МИН. UB	UGL min. UB МИН. UB
		GL min. GB	GL min. GB
<b>ACIDI ED ALCALI A BASSA CONCENTRAZIONE</b> ACIDS AND LOW CONCENTRATION ALKALIS	ISO 10545-13	UGL DA ULA, ULB A ULC FROM ULA, ULB TO ULC / DE ULA, ULB A ULC	UGL DA ULA, ULB A ULC FROM ULA, ULB TO ULC / DE ULA, ULB A ULC
		GL DA GLA, GLB A GLC FROM GLA, GLB TO GLC / DE GLA, GLB A GLC	GL DA GLA, GLB A GLC FROM GLA, GLB TO GLC / DE GLA, GLB A GLC
<b>ACIDI ED ALCALI AD ALTA CONCENTRAZIONE</b> ACIDS AND HIGH CONCENTRATION ALKALIS		METODO DISPONIBILE AVAILABLE ON REQUEST	METODO DISPONIBILE AVAILABLE ON REQUEST
 <b>RESISTENZA ALLE MACCHIE</b> STAIN RESISTANCE	ISO 10545-14	METODO DISPONIBILE AVAILABLE ON REQUEST	min. 3
 <b>STABILITÀ DEI COLORI ALLA LUCE</b> COLOUR STABILITY TO LIGHT	DIN 51094	NON DEVONO PRESENTARE APPREZZABILI VARIAZIONI DI COLORE THEY DO NOT HAVE TO SHOW VISIBLE COLOUR ALTERATION	CONFORME COMPLIANT

\* SPESSORI RIFERITI AL FORMATO 20X20 / THICKNESSES REFERRED TO 20X20 SIZE

\*\* SPESSORI RIFERITI AL FORMATO 60X60 / THICKNESSES REFERRED TO 60X60 SIZE

## Caratteristiche Tecniche Bicottura Double Firing Technical Specifications

UNI EN 14411 (ISO 13006) - BIII (appendice L)

CARATTERISTICA SPECIFICATION	METODO DI PROVA TEST METHODS	REQUISITI PREVISTI DALLA NORMA REQUIREMENTS IN ACCORDANCE TO THE STANDARDS	VALORE IMOLA IMOLA AVERAGE VALUE
 <b>DIMENSIONI E ASPETTO</b> DIMENSIONS AND APPEARANCE	ISO 10545-2	PROSPETTO L.1 PROSPECT L.1	CONFORME COMPLIANT
 <b>ASSORBIMENTO D'ACQUA</b> WATER ABSORPTION	ISO 10545-3	> 10%	> 10%
 <b>RESISTENZA A FLESSIONE</b> FLEXURAL RESISTANCE		<b>SPESSORE / THICKNESS</b>	> 17 N/mm <sup>2</sup>
<b>SFORZO DI ROTTURA</b> MODULUS OF RUPTURE	ISO 10545-4	<b>SPESSORE / THICKNESS</b>	CONFORME COMPLIANT
 <b>COEFFICIENTE DILATAZIONE TERMICA LINEARE (α)</b> LINEAR EXPANSION THERMIC COEFFICIENT	ISO 10545-8	METODO DISPONIBILE AVAILABLE ON REQUEST	≤ 7x10 <sup>-6</sup> °C <sup>-1</sup>
 <b>RESISTENZA AGLI SBALZI TERMICI</b> RESISTANCE TO SUDDEN TEMPERATURE CHANGES	ISO 10545-9	METODO DISPONIBILE AVAILABLE ON REQUEST	RESISTE RESISTANT
<b>RESISTENZA AL CAVILLO</b> CRAZING RESISTANCE	ISO 10545-11	RICHIESTA ALWAYS TESTED	RESISTE RESISTANT
 <b>PRODOTTI CHIMICI AD USO DOMESTICO ED ADDITIVI PER PISCINA</b> HOUSEHOLD CHEMICALS AND SWIMMING POOL WATER CLEANSERS		min. GB	min. GB
<b>ACIDI ED ALCALI A BASSA CONCENTRAZIONE</b> ACIDS AND LOW CONCENTRATION ALKALIS	ISO 10545-13	METODO DISPONIBILE AVAILABLE ON REQUEST	METODO DISPONIBILE AVAILABLE ON REQUEST
<b>ACIDI ED ALCALI AD ALTA CONCENTRAZIONE</b> ACIDS AND HIGH CONCENTRATION ALKALIS		METODO DISPONIBILE AVAILABLE ON REQUEST	METODO DISPONIBILE AVAILABLE ON REQUEST
 <b>RESISTENZA ALLE MACCHIE</b> STAIN RESISTANCE	ISO 10545-14	min. 3	min. 3